



mountaintrue.

Protecting the Places We Share.

Evan Parker, Water Quality Administrator
April 4th, 2016

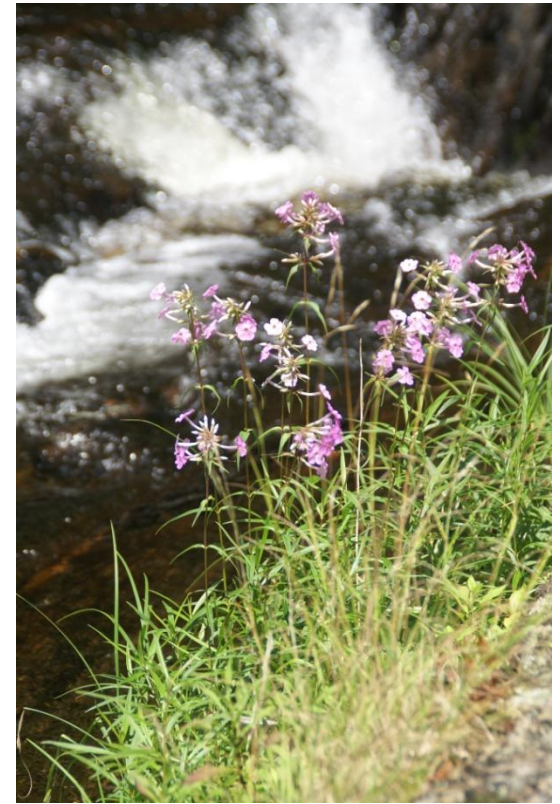
MountainTrue champions resilient forests, clean waters and healthy communities in Western North Carolina.



What we do

Focus on a core set of issues that have *high impact* on the *environmental health* and *long-term prosperity* of our region:

- Advocating sensible land use
- Restoring public forests
- Improving water quality
- Promoting clean energy
- Encouraging civic engagement

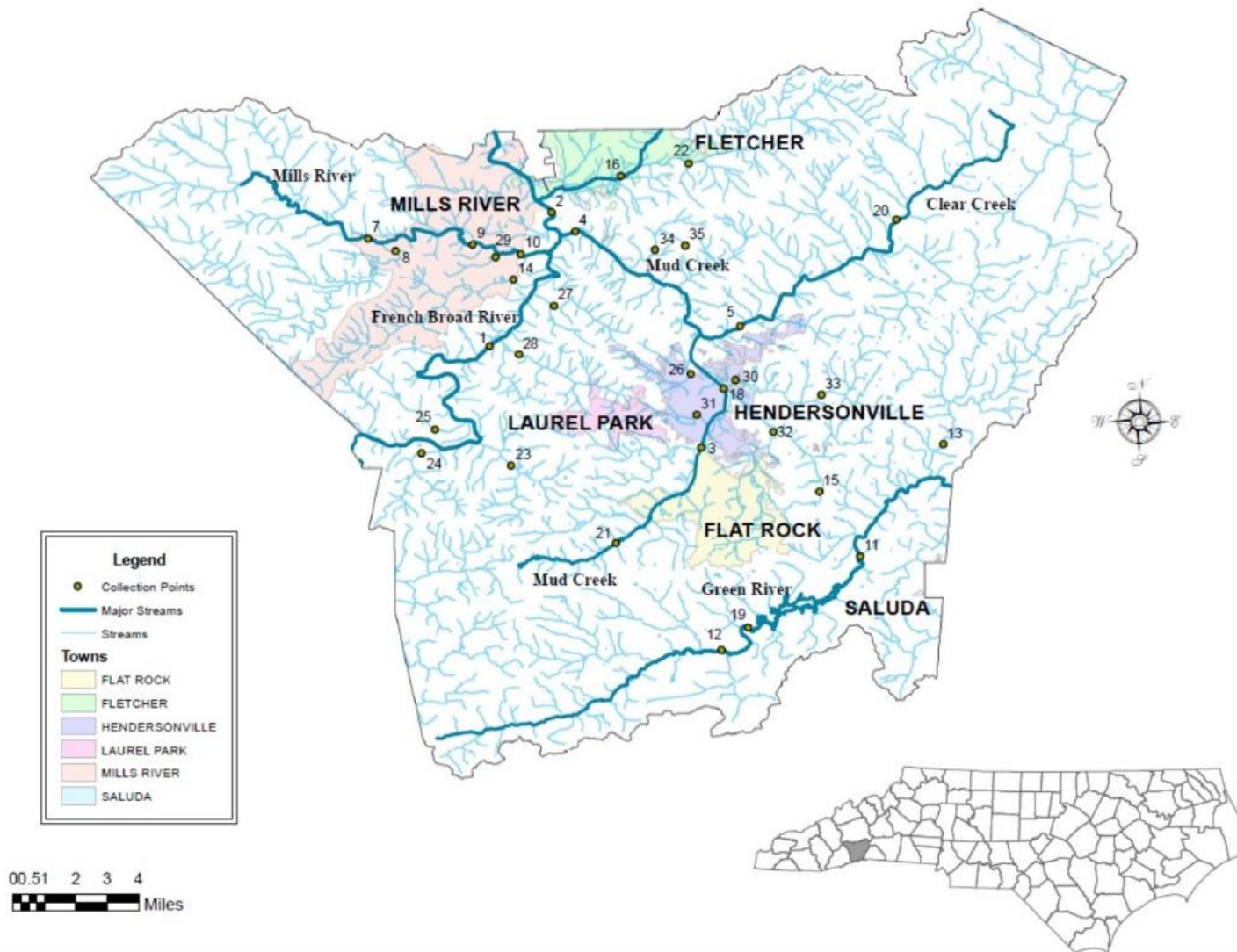


Volunteer Water Information Network (VWIN)

- Volunteer-based water quality monitoring program.
- 40 volunteers test 35 sites in all six Henderson County watersheds.
- Test for several parameters indicating pH, alkalinity, conductivity, nutrients, and sediment.
- 20 years of objective dataset.
- Allows MountainTrue and partners to identify streams facing degradation.
- Available for free to the public, municipalities.
- 2013-2014 VWIN Report.



Map of Henderson County VWIN Monitoring Sites



Mills River: Our Water Source

- Water source for Henderson County and parts of Buncombe County.
- Very good overall water quality, including the lowest nutrient levels in the County.
- The Mills River Partnership (MRP) utilizes VWIN data to monitor the overall water quality in the watershed
 - The MRP is an organization working with farmers on a voluntary basis to protect water resources.



Mills River Partnership

“I am elated to be working with the Mills River Partnership, they have been instrumental in helping me preserve topsoil”
-Kirby Johnson, local farmer



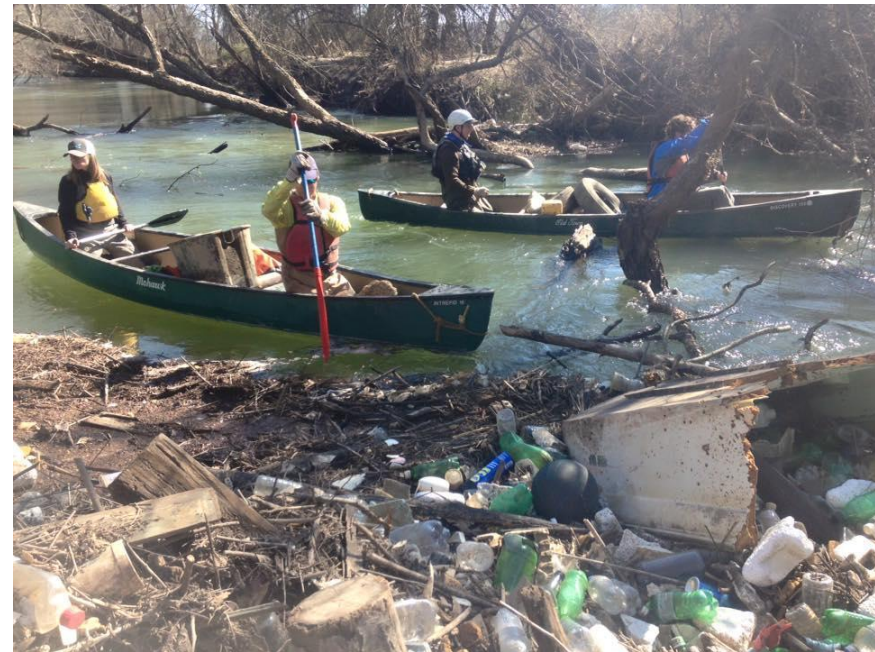
Green River

- The most pristine stream in Henderson County, with some of the lowest sediment levels in the County.
- Help promote Green River as a major destination for kayakers, tubers, fishers, and other recreationalists.



Mud Creek

- Largest watershed in Henderson County, is well monitored with 4 sites on Mud Creek and 10 sites on 8 tributaries of Mud Creek.
- The Mud Creek Watershed continues to be one of the most degraded watersheds in Henderson County.
- MountainTrue is currently developing a watershed management plan for Mud Creek that will expand our current monitoring, log jam removals, trash cleanups, tree planting and more.



Documents

- 2013-2014 Henderson County VWIN Report (electronic and hard copy versions available upon request)
- 2013-2014 Henderson County VWIN Executive Summary
- VWIN Program Overview
- Hendersonville Times-News “Live Staking” article